



No matter what logging job you're on, PRENTICE has the loader to make your day productive, profitable and comfortable. PRENTICE loaders are built using advanced boom design technology, for the strength and reliability needed to meet the demands of high production delimiting and loading. Advanced features such as smooth and responsive joystick controls, and quiet, comfortable cabs, contribute to making the name PRENTICE synonymous with quality.



### **Prentice Loader Booms**

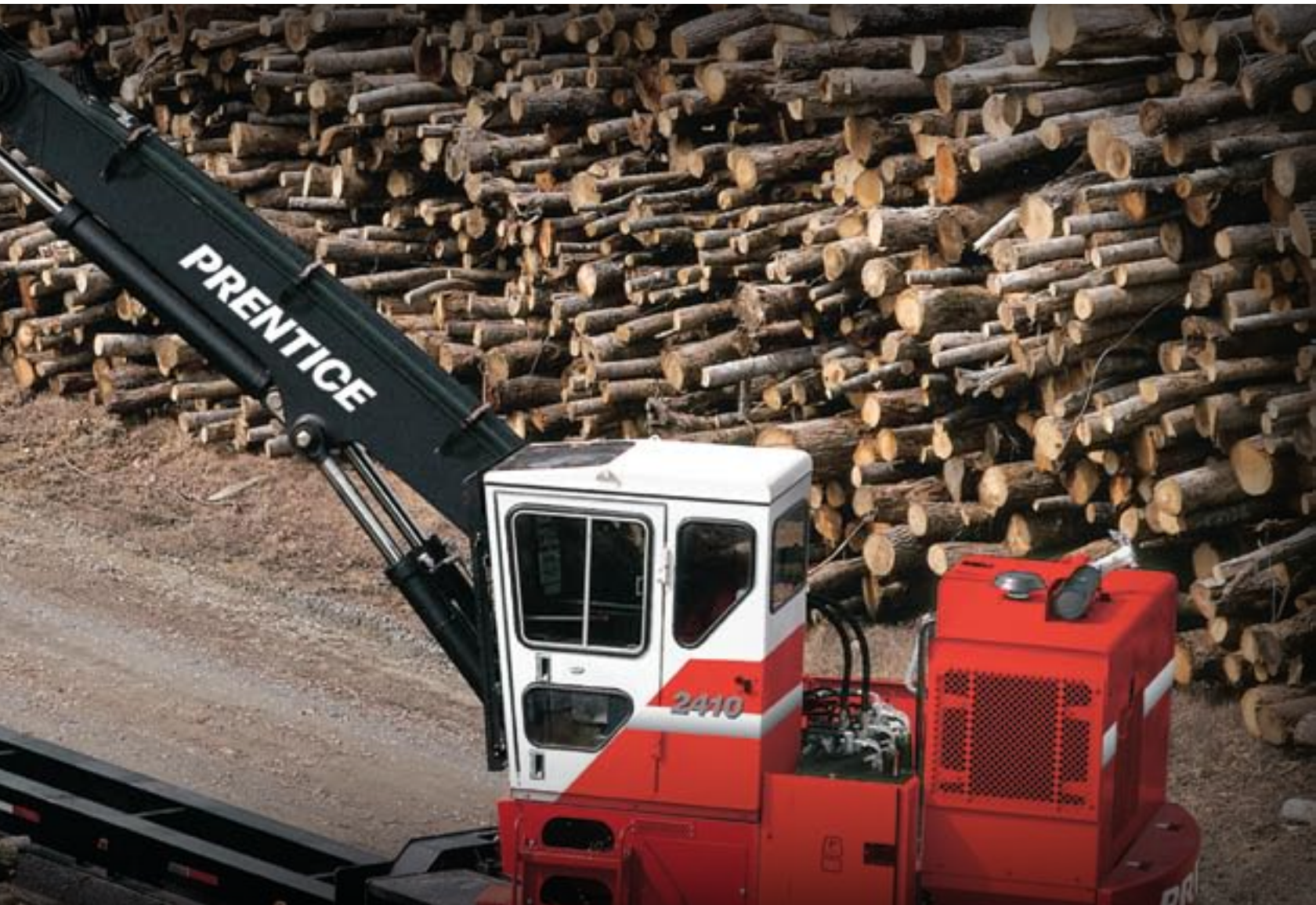
Prentice loader booms are built tough with welded high-strength steel. Delimiting booms feature heavy steel castings at the base end, stick end, and cylinder junctions with the main boom.

### **High Performance**

Prentice loaders feature swing torque ratings up to nearly 80,000 ft-lbs. Combined with swing speeds up to 9 RPM, Prentice loaders provide excellent performance in all applications from shortwood loading, to drag loading, and pull-through delimiting.

### **Engineered Stability**

Prentice heavy-duty subframes are engineered for high reliability. Lock valves integrated into the stabilizer circuit reduce cylinder movement and increase stability. Wide stabilizer leg spread, large pad size and deep below grade reach provide a stable base.



### **System Versatility**

Various factory installed hydraulic packages are available including bar saw slasher, delimber, carrier, and grapple saw, as well as the popular TMS II package.

### **High Visibility**

Excellent visibility of the work area is provided through large tinted cab windows. Overhead visibility is maximized through the large, tinted Lexan skylight. Operator protection is afforded by the front guard. This swingout guard is designed for quick and simple access for front window cleaning.

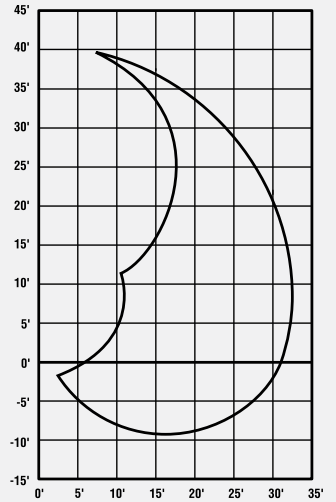
### **Superior Operator Station**

Prentice loader cabs are designed with operator comfort in mind. The spacious cabs feature a large, fully adjustable suspension seat with lumbar support. Fold-up armrests are fully adjustable to allow adjustment of the joystick controls to match the operator.

## 2410 & 2414 LIFT CAPACITY

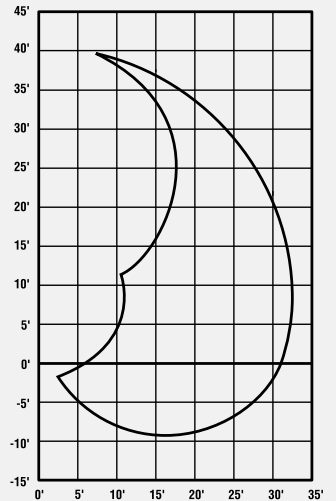
Lift Capacity Chart PRENTICE 2410 · Boom Type: Knuckleboom · Boom length: 32' 6"

		Radius															
		10'/3m		15'/4.6m		20'/6.1m		25'/7.6m		30'/9.1m		Max Reach					
		kg.	lbs.	kg.	lbs.	kg.	lbs.	kg.	lbs.	kg.	lbs.	kg.	lbs.				
Elevation	35'/10.6m			<b>5286.7</b>	<b>11655</b>											100% Hyd Over End Over Side	
				4599.5	10140												
				4599.5	10140												
	30'/9.1m					<b>4972.9</b>	<b>10963</b>									100% Hyd Over End Over Side	
						4326.4	9538										
						4326.4	9538										
	25'/7.6m					<b>5758.4</b>	<b>12695</b>	<b>4410.8</b>	<b>9724</b>							100% Hyd Over End Over Side	
						5010	11045	3937.4	8460								
						5010	11045	3937.4	8460								
	20'/6.1m					<b>6363.5</b>	<b>14029</b>	<b>5428.7</b>	<b>11968</b>	<b>2767.9</b>	<b>6102</b>					100% Hyd Over End Over Side	
						5536.2	12205	4722.9	10412	2408.2	5309						
						5536.2	12205	4722.9	10412	2408.2	5309						
15'/4.6m			<b>7299.3</b>	<b>16092</b>	<b>6877.5</b>	<b>15162</b>	<b>6073.2</b>	<b>13389</b>	<b>3974</b>	<b>8761</b>	<b>2324.2</b>	<b>5124</b>			100% Hyd Over End Over Side		
			6350.4	14000	5983.4	13191	5283.5	11648	3457.3	7622	2022.1	4458					
			6350.4	14000	5983.4	13191	5283.5	11648	3457.3	7622	2022.1	4458					
10'/3m			<b>9814.5</b>	<b>21637</b>	<b>8452.4</b>	<b>18634</b>	<b>6934.2</b>	<b>15287</b>	<b>4668.4</b>	<b>10292</b>	<b>2366</b>	<b>5216</b>			100% Hyd Over End Over Side		
			8538.6	18824	7353.8	16212	6032.9	13300	4061.5	8954	2058.4	4538					
			8538.6	18824	7353.8	16212	6032.9	13300	4061.5	8954	2058.4	4538					
5'/1.5m	<b>18436.1</b>	<b>40644</b>	<b>12083.4</b>	<b>26639</b>	<b>9112.8</b>	<b>20090</b>	<b>7295.7</b>	<b>16084</b>	<b>4947.4</b>	<b>10907</b>	<b>2480.3</b>	<b>5468</b>			100% Hyd Over End Over Side		
	16039.3	35360	10512.6	23176	7928	17478	6347.2	13993	4304.2	9489	2157.8	4757					
	16039.3	35360	10512.6	23176	7928	17478	6347.2	13993	4304.2	9489	2157.8	4757					
0 0.0	<b>10192.8</b>	<b>22471</b>	<b>12622.8</b>	<b>27828</b>	<b>9241.6</b>	<b>20374</b>	<b>7086.8</b>	<b>15644</b>	<b>4361.8</b>	<b>9616</b>					100% Hyd Over End Over Side		
	8867.9	19550	10981.6	24210	8040.1	17725	6173.5	13610	3794.8	8366							
	8867.9	19550	10981.6	24210	8040.1	17725	6173.5	13610	3794.8	8366							
-5'/-1.5m	<b>9419.5</b>	<b>20766</b>	<b>11628.5</b>	<b>25636</b>	<b>8447.8</b>	<b>18624</b>	<b>6120.4</b>	<b>13493</b>							100% Hyd Over End Over Side		
	8194.7	18066	10116.6	22303	7349.7	16203	5324.8	11739									
	8194.7	18066	10116.6	22303	7349.7	16203	5324.8	11739									



Lift Capacity Chart PRENTICE 2414 · Boom Type: Knuckleboom · Boom length: 32' 6"

		Radius															
		10'/3m		15'/4.6m		20'/6.1m		25'/7.6m		30'/9.1m		Max Reach					
		kg.	lbs.	kg.	lbs.	kg.	lbs.	kg.	lbs.	kg.	lbs.	kg.	lbs.				
Elevation	35'/10.6m			<b>6514.1</b>	<b>14361</b>											100% Hyd Over End Over Side	
				5667.3	12494												
				5667.3	12494												
	30'/9.1m					<b>6142.2</b>	<b>13541</b>									100% Hyd Over End Over Side	
						5343.8	11781										
						5343.8	11781										
	25'/7.6m					<b>6077.8</b>	<b>13399</b>	<b>5470.4</b>	<b>12060</b>							100% Hyd Over End Over Side	
						5287.6	11657	4759.2	10492								
						5287.6	11657	4759.2	10492								
	20'/6.1m					<b>6246.1</b>	<b>13770</b>	<b>5763</b>	<b>12705</b>	<b>3497.7</b>	<b>7711</b>					100% Hyd Over End Over Side	
						5434.1	11980	5013.6	11053	3043.2	6709						
						5434.1	11980	5013.6	11053	3043.2	6709						
15'/4.6m			<b>7689.4</b>	<b>16952</b>	<b>7085.2</b>	<b>15620</b>	<b>6041</b>	<b>13318</b>	<b>4944</b>	<b>10914</b>	<b>2967</b>	<b>6541</b>			100% Hyd Over End Over Side		
			6689.7	14748	6164	13589	5255.9	11587	4306.9	9495	2581.4	5691					
			6689.7	14748	6164	13589	5255.9	11587	4306.9	9495	2581.4	5691					
10'/3m			<b>10201</b>	<b>22489</b>	<b>9232.1</b>	<b>20353</b>	<b>7230.4</b>	<b>15940</b>	<b>5247.7</b>	<b>11569</b>	<b>3019.2</b>	<b>6656</b>			100% Hyd Over End Over Side		
			8874.7	19565	8031.9	17707	6290.5	13868	4565.5	10065	2626.8	5791					
			8874.7	19565	8031.9	17707	6290.5	13868	4565.5	10065	2626.8	5791					
5'/1.5m	<b>21356.8</b>	<b>47083</b>	<b>14054.3</b>	<b>30984</b>	<b>10646.4</b>	<b>23471</b>	<b>8611.6</b>	<b>18885</b>	<b>5083.1</b>	<b>11221</b>	<b>3164.3</b>	<b>6976</b>			100% Hyd Over End Over Side		
	18580.4	40962	12227.2	26956	9262.5	20420	7452.6	16430	4428	9762	2752.9	6069					
	18580.4	40962	12227.2	26956	9262.5	20420	7452.6	16430	4428	9762	2752.9	6069					
0 0.0	<b>10070.8</b>	<b>22202</b>	<b>14724.3</b>	<b>32461</b>	<b>10824.7</b>	<b>23864</b>	<b>8356.2</b>	<b>18422</b>	<b>4487</b>	<b>9892</b>					100% Hyd Over End Over Side		
	8761.7	19316	12810.1	28241	9417.6	20762	7269.8	16027	3903.7	8606							
	8761.7	19316	12810.1	28241	9417.6	20762	7269.8	16027	3903.7	8606							
-5'/-1.5m	<b>9314.2</b>	<b>20534</b>	<b>13622.5</b>	<b>30032</b>	<b>9940.6</b>	<b>21915</b>	<b>7256.7</b>	<b>15998</b>							100% Hyd Over End Over Side		
	8103.6	17865	11851.7	26128	8648.3	19066	6313.2	13918									
	8103.6	17865	11851.7	26128	8648.3	19066	6313.2	13918									

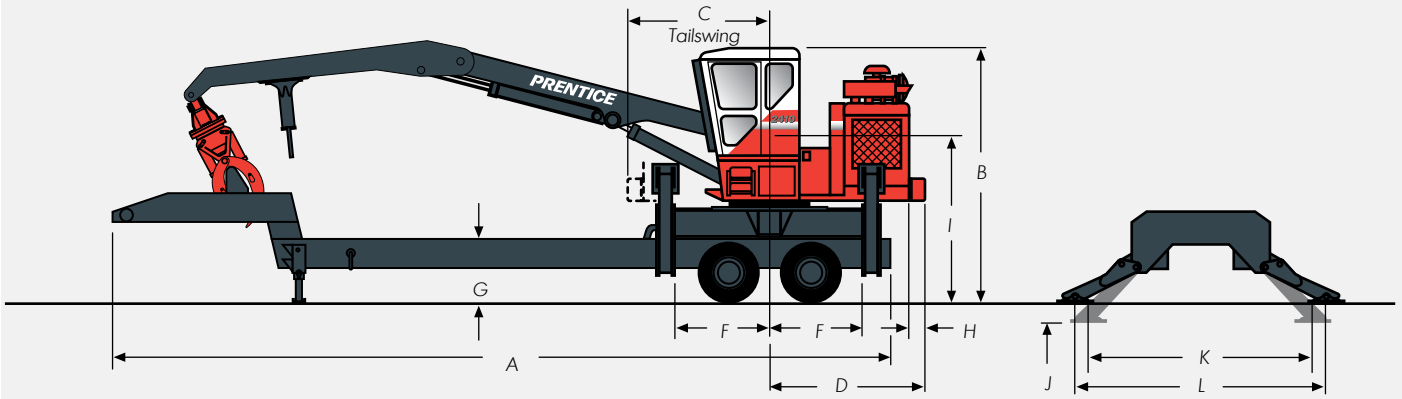


### NOTES:

Do not attempt to lift or hold any load that is greater than the rated values over the end or side at their specified lift point and height. The weight of the grapple and all lifting accessories must be deducted from lift capacities shown.

- The over end capacities and over side rated capacities do not exceed 87% of hydraulic limited capacity or 75% of stability limited capacity.  
--Stability limited capacities are indicated with an asterisk (\*).
- The lift point is located at the boom pivot pin.
- Lift capacities are based on the machine standing on firm, uniform supporting surface. User must make allowances for job site conditions.
- Operator should be fully acquainted with the Operator's Manual and all safety instructions furnished by Blount, Inc. prior to operating the machine.
- Lift capacities are in compliance with SAE J2417, "Lift Capacity Calculation Method--Knuckleboom Log Loaders and Certain Forestry Equipment".

## 2410 & 2414 DIMENSIONS



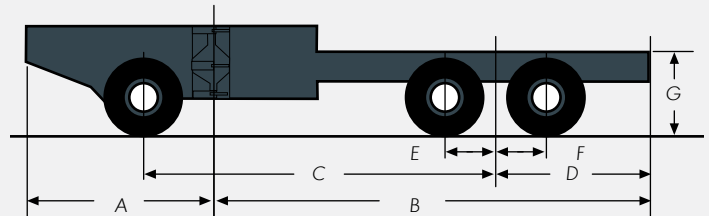
Machine Dimensions	2410		2414	
	cm	in	cm	in
A	1219.20	480.00"	1219.20	480.00"
B	398.78	157.00"	398.78	157.00"
C	248.92	98.00"	248.92	98.00"
D	238.13	93.75"	238.13	93.75"
E	152.40	60.00"	152.40	60.00"
F	152.40	60.00"	152.40	60.00"
G	99.06	39.00"	99.06	39.00"
H	27.31	10.75"	27.31	10.75"
I	269.24	106.00"	269.24	106.00"
J	39.37	15.50"	39.37	15.50"
K	454.66	179.00"	454.66	179.00"
L	495.30	195.00"	495.30	195.00"

### Dimensions of the "SPA" Self-Propelled Articulated Carrier

Shown (not to scale):

PRENTICE "SPA" Self-Propelled Articulated Carrier with 9.00x20 tires. Carrier is designed for PRENTICE 2410 & 2414 loaders.

A	269.24 cm	106.00"
B	477.52 cm	188.00"
C	411.48 cm	162.00"
D	162.56 cm	64.00"
E & F	68.58 cm	27.00"
G	101.60 cm	40.00"



### Specifications of the "SPA" Self-Propelled Articulated Carrier

<b>Articulating Cylinders</b>	(2); 8.89 cm (3 1/2") Bore, 5.08 cm (2") rod
<b>Speed</b>	Forward and Reverse, Low Range 5.23 km/h (3 1/4 mph), High Range 10.86 km/h (6 3/4 mph)
<b>Frame</b>	Welded 30.48 cm (12") I-beam, boxed in critical areas. Loader can be removed from carrier to facilitate service.
<b>Drive Axle:</b>	22,680 kg (50,000 lbs.) Rated live tandem (reconditioned)
<b>Front Axle:</b>	10,433 kg (23,000 lbs.) Rated Timken (reconditioned hubs)
<b>Tire Options</b>	9.00x20, 10 ply, 10.00x20, 10 ply, 11.00x20, 10 ply
<b>Wheels</b>	Rear-dual 10 hole Budd discs with 50.8 cm (20") rims Front-10 hole reversed Budd discs with 50.8 cm (20") rims. Rims will accept tire sizes up to 11.00x20
<b>Parking Brakes</b>	Spring-actuated brakes lock all four drive wheels; hydraulically released.
<b>Service Brake</b>	Hydraulically actuated brakes for all four drive wheels.
<b>Articulating Pivot</b>	(2) Pins, 7.62 cm (3") diameter special alloy steel
<b>Power</b>	Five-piston radial two-speed drive motor with shift control located in loader cab.
<b>Steering Lockout</b>	Mechanical lockout link provided to freeze the articulation joint during transit or maintenance.
<b>Steering</b>	Special "float" valve in loader swing control permits articulation while boom and grapple rest on front section of carrier frame. Lockout ensures that "float" valve may ONLY be activated while carrier is in "DRIVE" mode.
<b>Gradeability</b>	17.6%
<b>Weight</b>	Approximately 8,391 kg (18,500 lbs.) Less tires
<b>Turning Radius</b>	9.45 meters (31 feet)
<b>Color</b>	Black
<b>Wheelbase</b>	411.48 cm (162")

## 2410 & 2414 SPECIFICATIONS

		2410	2414
<b>Engines &amp; Driveline</b>			
Cummins	QSB 173HP TIER 3	STD	STD
Engine RPM	Full Load Governed	2200	2200
Electrical	12 V System, Circuit Breaker Protection, Master Electrical Disconnect Switch Electronic Monitoring System, 2 Cab Mounted Work Lights 2 Boom Lights, Block Heater, Cold Weather Start Kit	STD	STD
Pump Drive	Direct	OPT	OPT
	29.21 cm (11 1/2") Manual Clutch	STD	STD
		OPT	OPT
<b>Operator's Cab</b>			
	94 cm (37") x 127 cm (50") left side mounted with isolation pads, Tinted Safety Glass Windows, Lexan Skylight, Sun Visor, Fully adjustable Seat with Fold-up armrests, Operator protection Guard, Pressurized Cab with Heat/Air Conditioning, Integral Heat/AC Ductwork	STD	STD
	Tachometer	OPT	OPT
	Windshield Wiper/Washer, Horn, Defroster Fan, Lighter, Dome Light, Fire Extinguisher Swing Open Door with Sliding Window, Sliding Cab Window	STD	STD
<b>Hydraulic System</b>			
	3 in-line gear pumps	STD	
	Two Variable Displacement Axial Piston Pumps		STD
Flows	LPM (GPM) @ 2200 RPM	216 (57), 155 (41), 125 (33)	394 (104)
	Pilot Pump (Standard with pilot joysticks)	STD	STD
Pressure	System kPa (PSI)	17,236 (2,500)	24,131 (3,500)
	Swing kPa (PSI)	17,236 (2,500)	22,063 (3,200)
Swing Motor	Axial Piston Motors	STD	STD
Swing Speed	RPM	7	9
Control	Pilot Joysticks	STD	STD
	Dual Swing Pedals		STD
	Single Rocker Type Swing Pedal	STD	
	Electrical Stabilizer Controls	STD	STD
Filtration	Two Single Element Return Filters	STD	STD
	Case Drain Filters		STD
	Saw Return Filters		STD
Swivel	Steel Barrel with Durabar Core	STD	STD
Serviceability	Diagnostic nipples on pumps, Hand Hydraulic Oil Fill Pumps	STD	STD
Auxiliary Hydraulics	Bar Slasher/Hydraulics, Delimber Hydraulics, Carrier Hydraulics Delimber/Carrier/Bar Slasher Hydraulic Package	OPT	OPT
Cylinders, Bore x Rod (in.)	Main (2)	15.24 cm x 10.16 cm (6"x4")	12.7 cm x 7.62 cm (5"x3")
	Stick (1)	17.78 cm x 10.16 cm (7"x4")	15.24 cm x 10.16 cm (6"x4")
	Live Heel	15.24 cm x 10.16 cm (6"x4")	12.7 cm x 7.62 cm (5"x3")
	Stabilizer(4)	15.24 cm x 10.16 cm (6"x4")	15.24 cm x 10.16 cm (6"x4")
<b>Structural</b>			
Upper Frame	48.26 cm (19") Fixed Mount Cab Riser (3.7 m / 12' Eye Level)	STD	STD
	91.44 cm (36") Hydraulic Cab Riser (4.12 m / 13'5" Eye Level)	OPT	OPT
	139.7 cm (55") Fix Mount Cab Riser (4.57 m / 15' Eye Level)	OPT	OPT
Counterweight	kg (Lbs.) Cast Iron	1,392.5 (3,070)	1,392.5 (3,070)
Tailswing	with/without counterweight	249 cm/249 cm (98"/98")	249 cm/249 cm (98"/98")
Booms	9.9 m (32'6") Knuckleboom	STD	STD
	10.97 m (36') Knuckleboom, 10.21 m (33'6") Live Heel Boom	OPT	OPT
Heels	Single "V" Heel, Double "W" Heel	OPT	OPT
Grapple Mounting Knuckle	22.86 cm (9") Length	STD	STD
	30.48 cm (12") Length (for use with live heel booms)	OPT	OPT
Swing Bearing	Diameter	137 cm (54") OD	137 cm (54") OD
	Gearing	External	External
Lower Frame	Bolt-on Skid Resistant Fenders, Two Wide Tread Ladders	STD	STD
Turntable Mounting	Centered Turntable	STD	STD
Stabilizers (4)	Spread at Grade	495.3 cm (195")	495.3 cm (195")
	Spread at Max Down Reach	454.66 cm (179")	454.66 cm (179")
	Reach Below Grade	39.37 cm (15 1/2")	39.37 cm (15 1/2")
	Pad Size	55.88 cm x 66.04 cm (22"x26")	55.88 cm x 66.04 cm (22"x26")
Installation Kit	Standard Heavy Duty Kit	STD	STD
Stationary Electric Mount		OPT	
<b>Capacities</b>	Fuel Liters (Gallons)	336.9 (89)	336.9 (89)
	Hydraulic Liters (Gallons)	246 (65)	246 (65)
<b>Unit Weight</b>	Wet, with standard boom, less options, carrier and grapple - kg (Lbs.)	15,422 (34,000)	15,422 (34,000)



www.prenticeforestry.com

**Blount Inc.**  
535 Mack Todd Road  
Zebulon, NC 27597  
919-269-7421

We reserve the right to change specifications and to improve our products without notice or obligation.

Form No. PRKBL4-1106 · Printed in U.S.A.